

M² INTERIOR DESIGN 4

RESIDENTIAL
RETAIL
DINING
PUBLIC

M²

INTERIOR DESIGN 4

RESIDENTIAL
RETAIL
DINING
PUBLIC

M² Interior Design 4

Copyright © 2012 by SANDU PUBLISHING



Sponsored by: Design 360° – Concept and Design Magazine
Chief Editor: Wang Shaoqiang
Executive Editor: Zhong Limin
Chief Designer: Wang Shaoqiang
Book Designer: Antiny Wu
Sales Managers:
Niu Guanghui (China), Daniela Huang (International)
Address:
3rd Floor, West Tower,
No.10 Ligang Road, Haizhu District,
510280, Guangzhou, China
Tel: (86)-20-84316758
Fax: (86)-20-84344460
sandu.sales@gmail.com
www.sandu360.com

Cover projects by Roberto Murgia + Studiofase + Carmine Concas, Ippolito Fleitz Group, Naruse Inokuma Architects, JAKOB+MACFARLANE, Atelier Heiss Architekten, Creneau International, 3GATTI, Nendo.

Published by: Sandu Publishing Co., Limited
Size: 285×286 mm
First Edition: 2012

ISBN 978-988-15703-8-3

All rights reserved. No part of this publication may be reproduced or transmitted in any form or by any means, electronic or mechanical, including photocopy, recording or any information storage and retrieval system, without prior permission in writing from the publisher.

Printed and bound in China

Preface

Interior Design Today

by Helen Hughes, Senior Designer, from SHH

As global awareness of the scarcity of resources continues to grow, designers are creating new trends in response to this mindset, including new forms of luxury, expressed through unostentatious aesthetics, simple forms, well-crafted details and material quality. Consumers, meanwhile, are reacting to the current global financial crisis by seeking a balance between tradition and innovation, with heightened interest in materiality, longevity and timelessness. Designers are now seeking to produce designs of permanent value, where enduring quality wins out over flamboyant, but throw-away, design.

Explorations into emerging technologies, both by designers and manufacturers, are looking at how new forms and possibilities can be applied to traditional materials. Eco-aware, energy-efficient environments and products are also growing in strength of design, which is to be applauded, whilst the desire for more permanence finds designers creating their own sense of sustainability by looking at ways to display the quality of hand-crafting as a statement of luxury.

Increased consumer awareness of global and local issues has also created a new demand for transparency, as well as proof of provenance and quality. As customers demand more responsibility from brands, the labels we work with increasingly tell us the story of their products and list their sustainable credentials.

Where interior environments are integral to brand expression, the key to success is attention to detail, achieved by breathing the tools of design into the whole concept. From high street to higher end chains, branding forms the basis for levels of continuity and consistency that inspires customer loyalty and familiarity. But, within that, we are also seeing a greater number of chains who are expressing a desire for their environments to be more flexible. Learning from the independents, these companies are creating less rigid branding formulae, that allow for layers of interpretation that seek to localize sites, preferring to seek points of difference and convey an atmosphere of one-off, individual stores, often by utilising site-specific indicators for inspiration.

The counterpoint to this is that core brand values need to be stronger, so that an overall brand ethos can be successfully blended with one-off and localize elements. This move is also being driven by consumer insights, where a dislike of aggressive marketing ploys is meeting a thirst for bespoke and personalize products and environments.

At SHH, outside of the functional and logistical aspects of our clients’ briefs, the environments themselves - their location, history and purpose - all provide a wealth of inspiration for design. Through site-specific, research-based design, we aim to seek unique solutions for each client by relating the interior to the original building and seeking deeper connections that can be translated into new interior environments, breathing new life into existing spaces and enabling a far more authentic experience.

Creating distinct environments with underlying connectivity to both site and offer allows us to build on the growing desire for added flexibility in branded design, as well as supporting our aim of promoting the timelessness of good design. Through enduring, robust solutions that fully support our clients’ visions and aspirations, we maximise the unique potential of each space to provide appropriate backdrops, from which our clients can sell their respective products and services.

Being aware of global and local trends and new approaches is vital in delivering the best possible solutions that will allow our clients to remain competitive in the market place. Our role is to promote our clients’ vision and to contribute to the success of their businesses by creating the best possible environments for their brands.

Whilst we are very operations-focused, logistical concerns never get in the way of our creativity and are always integrated seamlessly into the final interior design solution.

The Answer of Space

By Francesc Rifé, Francesc Rifé Studio

Space talks in various levels: about itself, shapes, textures, materials, utilities... even about ourselves, because our elections define us: the slightest detail tells the others about our influences and preferences. When designing a space, we must bear in mind that it will become a part of something, a place to live, to work and to show. An empty room is full of expectations; some of them related to usefulness, others with taste. Design is a conversation between space and yourself, it questions you, it always demands an answer, differentiates in every case, and is always meaningful to all elements. Chillida once said, " My sculptures draw spaces, thanks to them you see emptiness clearly, they are a frame for the void". I play. I take concrete, I make it light; I transform rooms with hidden doors or with a game of shadows; I build atmospheres, rooms that never bore and change at the light of dawn. It's a trick for the eye which shows who you really are at any moment, because your stance evolves with you.

In music, silence is a value, it allows you to appraise the cadence, and it is an element that allows you to really understand the previous phrase. In space, we need a rest to perceive what the materials tell us, to pause to appreciate the touch of wood or the smell of metal. Eventually, we perceive everything as a whole, as the melody of a story we wanted to express with variations and rhythm, a melody that lays in the coherence that guides you once you draw. Desire shapes emptiness, we fall in love with the fragility of a lamp that appears from nowhere. Some structures challenge us with their impossible forms and instinct tells us "that's too much" or "you only have to listen and provide in an harmonious way". As a designer, we need to follow the concept, because there is always a concept that will guide us when we feel we don't have the answer, a sense of rightness difficult to explain.

You have to be brave and respectful to that voice that maybe will change everything. Sometimes you must discard pieces you really fancy because it doesn't fit. Keep the idea in mind that designers shoud give room to variation, find a balance and communicate it to your team, who will translate it as well without losing continuity.

And when it's finished, go through it and recover the melody that was before in your head repeating like an echo by space. Your answer.

Contents

Residential

- 8
- Roberto Murgia + Studiofase + Carmine Concas
- 4 Lofts in Milan, Italy
- 12
- Label Architecture
- Fiat Lux, Belgium
- 16
- Daisuke Sugawara / SUGAWARADAIJUKE
- CELL + wood / fabric, Japan
- 20
- Hiroko Karibe Architects + Naruse Inokuma Architects
- Setagaya Flat, Japan
- 24
- Mitsutomo Matsunami Architect & Associates
- Residence in Matsugaoka, Japan
- 28
- Nota Design International Pte Ltd
- House at Hillside, Singapore
- 32
- Miel Architects
- SANTPERE47, Spain
- 36
- Akira Koyama + KEY OPERATION INC. / ARCHITECTS
- House Taishido, Japan
- 40
- Vladimir Radutny + Paul Tebben / STUDIO IDE Architects
- Planted Environment, USA
- 42
- Naruse Inokuma Architects
- Room101, Japan
- 44
- Daigo Ishii + Future-scape Architects
- House in Nagaoka, Japan
- 48
- AKASAKA SHINICHIRO ATELIER
- Topographic House, Japan
- 52
- AKASAKA SHINICHIRO ATELIER
- Small Box House, Japan
- 56
- 3six0 Architecture
- Pettaquamscutt River Residence, USA
- 60
- za bor architects
- The House on Nikolina Gora, Russia
- 64
- JM Architecture
- Lake Lugano House, Switzerland
- 68
- JM Architecture
- Como Loft, Italy

- 72
- Studio Guilherme Torres
- MC House, Brazil
- 76
- KOCHI ARCHITECT'S STUDIO
- Shinkawasaki Infill, Japan
- 80
- Ferrolan LAB
- Family House in Sant Andreu, Spain
- 86
- Zecc Architecten
- Chapel Utrecht, The Netherlands
- 90
- 3six0 Architecture
- Paschke Danskin Loft, USA
- 94
- IROJE KHM Architects
- So Da Hun, South Korea
- 98
- COR & Partners (Miguel Rodenas + Jesús Olivares)
- Loft Beach, Spain
- 102
- IROJE KHM Architects
- Island House, South Korea

Retail

- 108
- Klab Architecture / Konstantinos Labrinopoulos
- Placebo Pharmacy, Greece
- 112
- HHF architects
- Confiserie Bachmann, Switzerland
- 116
- ninkipen!
- panscape 2jo, Japan
- 118
- Atelier Heiss Architekten
- Anukoo – Fair Fashion Shop, Austria
- 120
- Autoban
- Arzu Kaprol Galata, Turkey
- 122
- Duccio Grassi Architects
- MAX & Co Hong Kong, China
- 126
- 3six0 Architecture
- The Achilles Project, USA
- 130
- Atelier FCJZ
- Brand New China Concept Shop Interior Design, China
- 134
- Kengo Kuma & Associates
- Lucien Pellat-Finet Shinsaibashi, Japan
- 138
- Ippolito Fleitz Group – Identity Architects
- Belfry Tashkent, Uzbekistan

- 140 **Pereda Perez Arquitectos**
Garcia Miguelez Jewelers, Spain
- 144 **TAO THONG VILLA + PROCESS5 DESIGN**
Bridal Magic, Japan
- 148 **LEE BROOM**
Personal Shopping Suite for TOPMAN's
Oxford Street flagship store, UK
- 150 **Daisuke Sugawara / SUGAWARADAISUKE**
Nico Nico Shop, Japan
- 154 **Crox International Co., Ltd**
Artemide Taiwan Flagship, Taiwan, China
- 158 **Facet Stustio**
Sneakerology & Streetology, Australia
- 162 **3GATTI**
ALTER store, China
- 166 **Chris Briffa Architects**
SHU, Malta
- 170 **Francesc Rifé Studio**
Nino Alvarez Shop, Spain
- 174 **Francesc Rifé Studio**
EG10 Store, Spain
- 178 **Sybarite**
Alberta Ferretti Los Angeles, USA
- 182 **CLS architetti**
Runway Shop, Vietnam
- 186 **RDAl - Rena Dumas Architecture Intérieure**
Hermès Rive Gauche, France
- 190 **Duccio Grassi Architects**
Max Mara Milan, Italy
- 194 **Creneau International**
BASE, Flagship Store, Belgium

Dining

- 200 **Fabiola Minas + Roberto Murgia + Simona Oberti**
Multipurpose Space for Cleary Gottlieb Steen and Hamilton, Italy
- 204 **A2G arquitetura**
Sushihana Restaurant, Portugal

- 208 **design studio MAEZM + Sarah Kim**
Everyday Chaa, South Korea
- 212 **3GATTI**
ZEBAR, China
- 216 **JM Architecture**
Caffè di Mezzo, Italy
- 220 **MYCC**
Istabil Kebap, Turkey
- 224 **LEVEL Architects**
Shima-Shima Café, Japan
- 226 **Mancini Enterprises**
Mocha Mojo, India
- 230 **Ippolito Fleitz Group – Identity Architects**
Wienerwald – Interior Concept for Restaurants, Germany
- 234 **COR & Partners (Miguel Rodenas + Jesús Olivares)**
26 Café, Spain
- 236 **Atelier Heiss Achitekten**
Restaurant Mario, Austria
- 240 **Horibe Naoko Architect Office**
Gallery Café Takeno, Japan
- 244 **Miquel Subiràs - MSB Estudi taller d'arquitectura i disseny**
6T7 Espai Café, Spain
- 246 **TDC Tsigos Design and Construction**
Frame Bar, Greece
- 248 **Stone Designs**
El Portillo, Spain
- 252 **Stone Designs**
Lapiaz, Spain
- 256 **Maciej Kurkowski & Julian Nieciecki & Mateusz Wójcicki / xm³**
Zmianatematu, Poland

- 260 **SHH**
Barbican Foodhall, UK
- 264 **SHH**
Barbican Lounge, UK
- 268 **Michael Sodeau Partnership**
Made in Camden, UK

- 270 **OPEN AD**
Restaurant MERLIN, Latvia
- 274 **JAKOB + MACFARLANE**
Pink Bar, France
- 278 **BNKR Arquitectura**
Hookah Lounge Satélite, Mexico
- 282 **Crox International Co., Ltd.**
Shanghai La Lé Wine Bar, China
- 286 **UXUS**
Heineken Lounge, USA
- 290 **VAÍLLO & IRIGARAY + GALAR**
Restaurante el Merca'O, Spain

- 296 **3six0 Architecture**
Circa Restaurant, USA

- 300 **Francesc Rifé Studio**
Arrop, Spain

- 304 **Atelier FCJZ**
Tang Palace, China

- 308 **Kengo Kuma & Associates**
Shato Hanten, Japan

- 310 **aoydesign**
Dining ICHI, Japan

- 312 **Nendo**
Kisala, Japan

- 314 **Hiroteni Yoshihiro + Ishida Yusaku / Archivision Hiroteni Studio**
Kagurasaka Kohaku, Japan

- 318 **3six0 Architecture**
Stix Restaurant and Lounge, USA

- 322 **Atsushi Kitagawara Architects**
CMIC Café, Japan

Public

- 326 **emmanuelle moureaux architecture + design + Aphelies Co.,Ltd**
abc kids, Japan
- 330 **partnerundpartner-architekten**
Murgel's Playhouse, Germany
- 334 **Josep Miàs + Partners | MiAS ARCHITECTS**
Herta Frankel Puppet Theatre, Spain

- 338 **Donaire Architects**
Warehouse Rehabilitation of Public Library and Music School, Spain

- 342 **Leonardo Omar Díaz**
New Coac Library, Spain

- 344 **zauberschole|n + buehler & buehler**
the horse on the ceiling – Library for Architecture, Art and Design, Germany

- 352 **inFORM studio**
Effigy Studios, USA

- 356 **Hiroteni Yoshihiro + Ishida Yusaku / Archivision Hiroteni Studio**
Community Center in the Osho Area, Spain

- 360 **Hiroteni Yoshihiro + Ishida Yusaku / Archivision Hiroteni Studio**
Leimond – Nagahama Nursery School, Japan

- 364 **richärd+bauer**
Desert Broom Library, USA

- 368 **inFORM studio**
Ann Arbor District Library – Traverwood Branch, USA

- 374 **Hiroteni Yoshihiro + Ishida Yusaku / Archivision Hiroteni Studio**
Fusion Museum Knit × Toys, Japan

- 380 **Skidmore, Owings & Merrill LLP + Craig Hartman + FAIA**
The Cathedral of Christ the Light, USA

- 384 **Belzberg Architects**
Lab at Belmar, USA

- 390 **Ippolito Fleitz Group – Identity Architects**
Palace of International Forums, Uzbekistan

- 398 Index

- 408 Acknowledgements



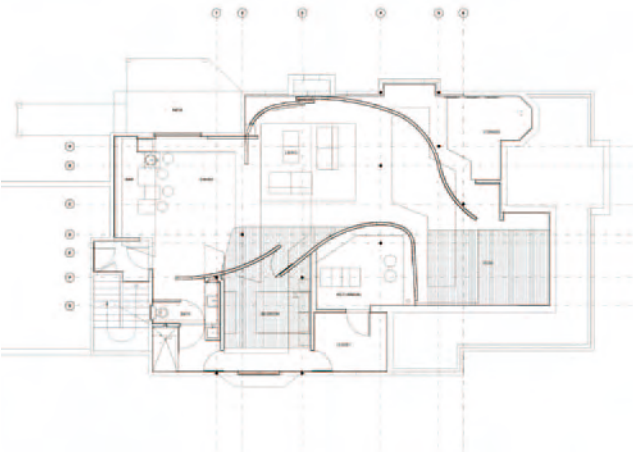
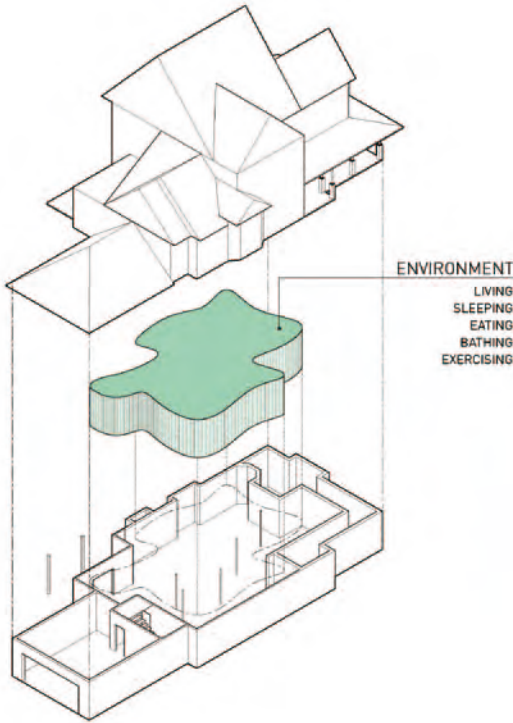
**Vladimir Radutny + Paul
Tebben / STUDIO IDE
Architects**
Planted Environment

Area: 139.35 sqm
Photography: Nathan Kirkman
Photography & STUDIO IDE Architects
Location: Chicago, USA
Residential

This ground level space inscribes the functions of living, entertaining and yoga into a traditional three-storey suburban home.

The clients, having lived and traveled in the eastern world, aspired to transplant the character of Southeast Asian living into their existing home. Rather than forcing the marriage between these two dissimilar architectural languages, the choice to disconnect each from the other created a world within a world. The fluid arrangement of spaces and the tectonic assembly of materials are in contrast to the rest of the house, thus providing a greater sense of transition from the everyday indoor environment. The conventional language of privacy enclosures is replaced with screening elements, typically found in the Eastern world. The partial height screens provide substantial visual privacy yet allow for light and air to permeate through the resultant voids.

Drawing on the horizontality within the dense lamination of Baltic birch plywood, the walls are assembled to appear woven. Each of 5,000 rectangular pieces of plywood is placed individually, not unlike the tedious assembly of the hand crafted water hyacinth furniture acquired by the client during their travels in Asia. The ceiling soffit adds an organizational framework between the vertical variation in the ceiling height and the overall plan. Its geometry is derived from the boundaries of existing infrastructural elements and runs counter to the direction of the spatial flow.



162-165
212-215

3GATTI
Italy, www.3gatti.com

Francesco Gatti formed his Rome based office 3GATTI in 2002 and opened a Shanghai branch office in 2004. His work ranges across architecture, art and interior design. Ever since his first design – the creation of the interstice spaces for the IN FACTORY JingAn Six Loft Buildings (2006) – Francesco Gatti has always employed a mix of heterogeneous solutions (ethereal false ceilings constructed with metal wires, curved forms, faceted voluminous shapes, dappled panelling, two-tone spaces). In each project the “formal” choice that defines the space never overshadows the function it is intended to serve. Gatti takes a general interior space and moulds it to find it an identity all of its own, giving movement to an otherwise characterless space, ready to welcome in people and products.

56-59
90-93
126-129
296-299
318-321

3six0 Architecture
USA, www.3six0.com

3six0 is an architecture firm headed by Kyna Leski and Chris Bardt. Our work is best defined by the spatial idea that is created out of the forces, content and limits unique to each project. This spatial idea acts as a guide to the many decisions through all stages – from sketch through construction. In this way, one does not perceive an applied theme or style. Instead, one experiences a sense of “place” that is integral to the situation, directly through the workings of the architecture: through phenomena – light, sound, view, shadow, balance – and through images triggered by the imagination.

204-207

A2G arquitetura
Portugal, adoisg.com

A2G arquitetura studio was born in 2004 by the duo architects Ângela Frias and Gonalo Dias. Both studied in Oporto, and their values were derived from a career marked by the collaboratin with the architect Paulo Providência. They developed projects such as housing unit in Matosinhos (2007 –

selected to “Habiatar Portugal” – selection of the best projects in Portugal between 2006-2008), the competition GBD 500m³ (Beijing, China – selected by the World Architects Community Awards in September 2008), the sustainable house competition Arquitectar09 (second place). Beside architecture sphere their interest in furniture design resulted in the creation the mo-ow design company. (www.mo-ow.com)

314-317
356-359
360-363
374-379

Archivision Hirotani Studio
Japan, www.archivision-hs.co.jp

Archivision Hirotani Studio is established by Yoshihiro Hirotani and Yusaku Ishida in 2006. Yoshihiro Hirotani. They both received SD Review, First Prize for Hoshino Stratum Museum. Yoshihiro Hirotani received JCD Second Prize in 2002, Annual Architectural Commendations in 2003,etc.

48-51
52-55

AKASAKA SHINICHIRO ATELIER
Japan, www.akasaka-atelier.com

AKASAKA SHINICHIRO ATELIER was established in 2000 by Shin-ichiro Akasaka, who graduated from Hokkai Gakuen University. Shin-ichiro Akasaka was awarded JCK Design Award, First Prize in 2003, Wood Application Competition, Special Prize in 2011,etc.

310-311

aoydesign
Japan, aoydesign.com

Aoydesign is an architect studio, established in 2003 and run by Shigeo Aoyama and Yukiko Sumitani.

130-133
304-307

Atelier FCJZ
China, www.fcjz.com

FCJZ is a leading architecture and design office in China. The practice was established in 1993 by Yung Ho Chang and Lijia Lu. FCJZ is iinternationally-honored with most prestigious recognitions in the fields of architecture and art, including award, publications and exhibitions for excellent design.

118-119
236-239

Atelier Heiss Architekten
Austria, www.atelier-heiss.at

Atelier Heiss Architekten, founded in 1997 by Christian Heiss, are based in Vienna. Today, projects

are developed by a staff of about 30, under the management of the three partners Christian Heiss, Michael Thomas und Thomas Mayer.

Atelier Heiss Architekten implements individual and unique projects in the fields of architecture and interior design. In close cooperation with our clients, we develop custom-made solutions with the highest standards of architecture.

322-325

Atsushi Kitagawara Architects
Japan, www.kitagawara.co.jp

Atsushi Kitagawara founded Atsushi Kitagawara Architects in 1982. He is a professor at Tokyo University of the Arts.

MAJOR WORKS: Big Palette Fukushima (AIJ Award), Gifu Academy of Forest Science and Culture (AIJ Award, BCS Award, Gold Medal ARCASIA Award, IA Award Italy, Grand-Prix Kenneth F. Brown Architecture Design Award), Uki Shiranui Library and Art Museum (Japan Library Architecture Award), ARIA (Gold Medal Good Design Award), Nakamura Keith Haring Collection Art Museum (Japan Art Academy Prize, Grand Prix JIA Award, AIA Japan Professional Honor Award, Togo Murano Award), Inariyama Special Education School, etc.

120-121

Autoban
Turkey, autoban212.com

Established in 2003 by Seyhan Özdemir and Sefer Çağlar, Autoban is a design studio operating in the fields of interior design, architecture and product development.

The foundations of Autoban were laid in the Galata district of Istanbul, taking its name from the architectural landmark tower. Inspired by the chaos of the mega city, contrasts, contradictions and the co-existence of otherwise autonomous elements are all trademarks of Autoban projects and products.

384-389

Belzberg Architects
USA, www.belzbergarchitects.com

Belzberg Architects is about architectural innovation.

Design is a collaborative process, a dialogue, between client and architect.

Form is a merger of conceptual investigation with production methodology.

Process accommodates sustainability, performance,

and large-scale implementation.

Practice is flexible, nimble, evolving, and unconventional.

278-281

BNKR Arquitectura
Mexico, www.bunkerarquitectura.com

Bunker Arquitectura is a Mexico City-based architecture, urbanism and research office founded by Esteban Suarez in 2005 and partnered by his brother Sebastian Suarez. In their short career they have been able to experience and experiment architecture in the broadest scale possible: from small iconic chapels for private clients to a master plan for an entire city. Bunker’s unconventional approach to architecture has continuously attracted attention and generated public debate with projects such as a three-kilometer habitable bridge that unites the bay of Acapulco and an inverted skyscraper 300 meters deep in the main square of the historic center of Mexico City.

166-169

Chris Briffa Architects
Malta, www.chrisbriffa.com

Chris Briffa completed his architecture degree at The University of Malta in 1999. Established in 2004 in Valletta, Malta; the studio’s work has become synonymous with skilful design which moves away from stylistic mannerisms and is more concerned with proportion, materials and detail.

In a few years, their relatively extensive project types have shown an innate capability of solving puzzles; of putting details together, making them flow from line to pattern; from plain to textured surface. No detail too complex, no project too small: their projects range from original product design to the complete styling and restructuring of large industrial buildings.

182-185

CLS architetti
Italy, www.clsarchitetti.com

Ever since its founding in 1993, by Giovanna Cornelio, Massimiliano Locatelli, Annamaria Scevola, with Davide Agrati associated since 2005, the architects practise CLS Architetti has developed design projects in different contexts: private homes, showrooms, stores and exhibitions, along with the architectural design of new buildings. On a smaller scale it also designs furniture, including both fitted furniture for individual projects and solutions for companies. Its collaboration with Tecno produces

the limited-edition collection of a series of cabinets and tables and for the brand Skitsch it designs accessories for the home.

COR & Partners

Spain, www.cor.cc

Cor is a company that works to “make things possible”: we want to be able to provide creative and optimal solutions to the opportunities facing us, with the objective of getting them into reality.

Cor is a team of creative and skilled, able to respond to multiple problems. We are committed to working in an interdisciplinary way in order to solve the many variables that a project entails.

Cor is a consultancy that works seamlessly in the world of Architecture, Planning and Engineering and in Business Management and Audit. To do so, rethink and brand updates, verifying and managing their identity and position in the Web.

Creneau International

Belgium, www.creneau.com

Since 1989, we have established a strong reputation as visionary and trendsetting designers. Our ideas of the anti-ordinary make brands flourish, products grow and businesses boom. Our added value is to provide full service: from all-round consultancy to concept development, from logo and packaging design to interior design, from implementation to franchise follow-up.

Crox International Co., Ltd

Twaiwan, China, www.crox.com.tw

We are a group of creative person embracing every project with passion and insights. We play with the design language vividly on problem solving and are proud of delivering our service innovatively. We are constantly fantasizing the scenario environment, engaging the architecture, creating the exhibition interaction, impelling the interior potential, and visualizing the illusion of art and design.

design studio MAEZM

South Korea, www.maezm.com

The studio consisting of two persons tells of “communication” which is based on the assumption, “difference” across limited expression range.

Through the outcomes of design expressed in various types like space, furniture, vision, image and lighting etc, it seeks to vividly present the process of understanding the design studio.

Donaire Architects

Spain, www.donairearquitectos.com

It is a youth team with a large experience working in innovated architecture with traditional and new materials. We design public and private buildings, furniture and graphic design.

Duccio Grassi Architects

Italy, www.ducciograssiarchitects.com

Duccio Grassi Architects develops projects and concept designs for buildings, boutiques and showrooms for Max Mara, Zara, Canali, Guru, Guess by Marciano, Penny Black, Max&Co, Ceramiche Refin, Iris Ceramica, among the other brands.

DGA also designs private villas, restaurants, jewelries, malls and offices, among which the extension of the Wafi City Mall in Dubai, the Al Hamra Mall, the Al Yasra Headquarters and the Mazaya Headquarters in Kuwait.

DGAs projects received awards in Paris, New York and Los Angeles.

emmanuelle moureaux architecture + design

Japan, www.emmanuelle.jp

Emmanuelle Moureaux is a French architect and designer residing in Tokyo since 1996. She established “emmanuelle moureaux architecture + design” in 2003.

Architecture, interior, furniture, products, she designs a wide range of projects, by using her technique of color scheming and handling colours as space makers. She uses colors as three-dimensional items, like layers, in order to create spaces, and not as an element applied at the end of the design process to decorate the space.

She is Associate Professor at the Tohoku University of Art & Design since 2008.

158-161

Facet Studio

Australia / Japan, facetstudio.com.au

In 2008, Olivia Shih, a Taiwanese/ Australian architect, and Yoshihito Kashiwagi, a Japanese architect, combined different experiences and cultural backgrounds to form Facet Studio. Facet Studio’s architectural journey starts from looking for the most suitable answer for given conditions such as budget, construction methodology, site regulatory restrictions, and natural environments.

Once we have figured out the design potential, we patiently polish that rough gemstone, injecting our passion and energy, until it shines with multifaceted radiance.

Ferrolan LAB

Spain, lab.ferrolan.com

Ferrolan LAB is situated in Rubi (Barcelona). Our work in the studio is focused on architecture, design and new materials. Our working method starts from the exhaustive study of the customer needs. We design to the last detail. Houses are totally custom-built. We keep control of the whole process of the work. Integral development. We believe it is the only way to ensure the final quality of the work.

Our work includes all types of projects of different size, from interior design projects and furniture design to complete construction projects.

Francesc Rifé Studio

Spain, www.rife-design.com

In 1994, after several years of training in his field, Francesc Rifé established his own studio in Barcelona. From here he directs his team with a fusion of different disciplines. His projects range from Interior to Industrial Design, both containing commercial and private projects. The design principle is based on the search for spatial order and geometric proportion.

Future-scape Architects

Japan, www.future-scape.co.jp

Daigo Ishii + Future-scape Architects is established by Daigo Ishii in 1999. Daigo Ishii was graduated from the Graduate School of Architecture, Waseda University with Master of Engineering in 1985. He is a much awarding architect, such as Good Design Award for “Cottagein Tsumari” in 2000, 2nd Prize

in Renovated Architecture Competition for “JIGSAW” in 2007, etc.

Studio Guilherme Torres

Brazil, www.guilhermetorres.com

Studio Guilherme Torres is a perfectionist. It says so on his arm. Not in so many words, but via the Daft Punk quote that graces both his skin and the walls of his Londrina studio.

This unofficial motto describes a work ethic and commitment to quality that is readily apparent in his work. The crisp forms, minimalist details, and rich-but-reserved material palettes that characterize his designs are consistently applied across single-family residences, interior renovations, retail fit-outs, and of course...his own home and office. Balancing the rigorous aesthetic of the architecture, a certain playful levity can be found in the interior design of his projects.

xm³

Poland, grupa.xm3@gmail.com

xm³ group – (pronounced: “x cubic metres”) is a group of various young collaborating designers, Maciej Kurkowski , Julian Nieciecki and Mateusz Wójcicki between years 2010 and 2011. The idea of xm³ was to create a co-working group of creatives, active on fields of: Architecture, Interior Design, Industrial Design, Graphics and Visualization. The form of the collective is open and aims for collaboration with everyone, who is keen to use its experience and bring in it his potential, which is a part of their individuality.

HHF architects

Switzerland, www.hhf.ch

HHF architects was founded in 2003 by Tilo Herlach, Simon Hartmann and Simon Frommenwiler. Since then HHF architects has realized projects in Switzerland, Germany, China, Mexico and the USA. The scope of work ranges broadly and includes: large scale construction, e.g., fashion center Labels Berlin 2; interior design, e.g., the Confiserie Bachmann in Basel; master planning, e.g., the public space and mobility strategy for the Praille Acacias Vernets, Geneva; public structures, e.g., Ruta del Peregrino Lookout Point of a pilgrimage route in Mexico; or the Baby Dragon pavilion in the Jinhua Architecture Park, China.

20-23

Hiroko Karibe Architects

Japan

Hiroko Karibe received Bachelor of civil engineering from Science University of Tokyo in 1997 and Bachelor of Architecture from Japan Women’s University in 2002. She opened Karibe Hiroko Architects in 2009.

240-243

Horibe Naoko Architect Office

Japan, www.naoko-horibe.com

Horibe Naoko Architect Office is established by Naoko Horibe in 2003, with specialization in architectural design.

352-355

368-373

inFORM studio

USA, in-formstudio.com

inFORM studio is a Woman-owned, WBE certified, design based practice with three offices in Detroit, Michigan, Myrtle Beach, South Carolina, and New York City. Each office is fully integrated and collaborates with teams set for each project that span all three locations. In March 2011, inFORM studio was selected as AIA Michigan Firm of the Year.

138-139

230-233

390-397

Ippolito Fleitz Group – Identity Architects

Germany, www.ifgroup.org

Ippolito Fleitz group is a multidisciplinary, internationally operating design studio based in Stuttgart.

We are identity architects. We work in unison with our clients to develop architecture, products and communication that are part of a whole and yet distinctive in their own right.

As architects of identity, we conceive and construct buildings, interiors and landscapes; we develop products and communication measures. We do not think in disciplines. We think in solutions. Solutions that help you become a purposeful part of a whole and yet distinctive in your own right.

94-97

102-107

IROJE KHM Architects

South Korea, www.irojekhm.com

Architect HyoMan Kim is the principal of IROJE KHM Architects.

He is a multi award-winning architect in Seoul, Korea,including 2011 8th and 2010 7th 2009 3rd and 4th World Architecture community Award (20 + 10 + X award), 2005~2006, 2007~2008 ARCASIA(Architects Regional Council of Asia) AWARD GOLD MEDAL, Architectural Culture Award of Korea, Architectural Award of Seoul, CRI-AC AWARD, etc...

274-277

JAKOB + MACFARLANE

France, www.jakobmacfarlane.com

Jakob + MacFarlane is an architectural firm based in Paris, France. Its work explores digital technology both as a conceptual consideration and as a means of fabrication, using new materials as a possibility to create a more flexible, responsive and immediate environment.

64-67

68-71

216-219

JM Architecture

Italy, www.jma.it

JM Architecture, founded in 2005 by Jacopo Mascheroni and based in Milan, provides a range of architectural and design services to clients in Italy and abroad. The firm creates spaces where refined, pure, and timeless architectural lines meet with the most advanced technology to provide a graceful combination of exceptional aesthetic elegance, utility, and comfort. The works have earned national and international attention and have been published in print on four continents as well as widely published online.

134-137

308-309

Kengo Kuma and Associates

Japan, kkaa.co.jp

36-39

KEY OPERATION INC./ ARCHITECTS

Japan, www.keyoperation.com

Our aim is to find the simplest and the most innovative space composition, construction method or other architectural technique that does tackle the different problems and give a coherent, clever, logical solution. In order to do so, we will investigate and analyze the customer’s requirements, observe the urban context, understand the social interactions, acknowledge local history, culture, regulations and natural environment, study building materials and techniques.

108-111

Klab Architects

Greece, www.klab.gr

klab architecture (kinetic lab of architecture) was established at the end of 2007 by Konstantinos Labrinopoulos the co-founder of klmf architects.

Konstantinos Labrinopoulos with a team of high talented architects from around the world is pursuing through research, high quality architectural design in any project.

With more experience and even more enthusiasm klab aim to deliver a new architectural proposal.

76-79

KOCHI ARCHITECT'S STUDIO

Japan, www.kkas.sakura.ne.jp

Kochi Kazuyasu completed the Master course in Tokyo University of the Arts in 2000 and established Kochi Architect’s studio in 2003.

12-15

Label Architecture

Belgium, www.labelarchitecture.be

Label Architecture is an architectural practice based in Brussels, Belgium. Its three partners, Jean-Didier Bergilez (b. 1974), Michel Lefèvre (b. 1978) and Thibaut Rome (b. 1977), officially opened their agency in October 2004. All three are graduates of the La Cambre Institute of Architecture in Brussels, a city they also call home. Their projects, on various scales, are as much an opportunity to play with existing space, from their common reference points, as not to take themselves too seriously while being serious about their work.

148-149

LEE BROOM

UK, www.leebroom.com

Lee Broom has become one of the UK’s leading interior and product designers. In his career to date Broom has designed over 40 bar and restaurant interiors across the UK and has won over 17 awards, with his work featuring in most major broadsheet and interior design publications. The Times acclaimed Broom as “the pin up of British manufacturing”. Lee Broom produces his unique contemporary pieces in the United Kingdom, working closely with talented manufacturers.

342-343

Leonardo Omar Diaz

Spain, leonardoomar-arquitectos.com

224-225

LEVEL Architects

Japan, www.level-architects.com

226-229

Mancini Enterprises

India, www.mancini-design.com

Mancini enterprises – international team of architects, designers, engineers catering to divers projects ranging from product design and design intensive commission to large developments such as housing or hospitality.

Concept approach and design process are adapted to the nature of each project and client and services covered include all stages of design and engineering including allied fields of project management, graphic design...

334-337

Josep Miàs Partners | MiAS ARCHITECTS

Spain, www.miasarquitectes.com

Drawing is the basic element to measure the potential of each proposal. We draw and redraw, again and again, and every new sketch must produce a new possibility, to be formalized in a three-dimensional construction, a model. As far as they create new chances the project will move forward, going to and fro, frantically.

This gymnastic exercise gives consistency and lucidity to our work. We verify that every project-exercise should form part of the successive, providing new opportunities. Also the disposition of our desks in the space we work makes the projects mixing and getting “tainted”. This way we confirm that we are always doing the same project.

268-269

Michael Sodeau Partnership

UK, www.michaelsodeau.com

Michael Sodeau Partnership is a multidisciplinary design studio. We design furniture, lighting and product for a variety of international clients. We also undertake commissions and have designed interiors and exhibition spaces, often curating the exhibitions. In addition, we also design web sites and graphic/brand identities for several clients, art directing the entire process.

Another important aspect of the service we can provide is project management, whether it is the production of furniture for a Hotel, managing an interior project or overseeing a print run.

Miel Architects

Spain, www.mielarquitectos.com

Miel Architects is the studio founded by Miguel Angel Borrás and Elodie Grammont in Barcelona, from where we develop projects of architecture and urbanism.

In the studio we cultivate a special interest about refurbishment and interior renovation, where we discover and give voice to some remaining energies and begin a dialog with the new needs and stopping their entropy discovering new ways of enjoying them.

Miquel Subiràs - MSB Estudi taller d'arquitectura i disseny

Spain, www.msbestuditaller.com

MSB estudi-taller d'arquitectura i disseny is established in 2008, after a long and successful experience at RCR arquitectes.

MSB, is a path, a story where the essence is creativity, where the work are the projects, the reflections, the experimentation.... always connected to the world of architecture, interiors, design... communication. It's not walk for walk; the goal is to develop projects with personality, rigor... Evolve concepts and discover new elements that every time accompanies us to go further. Essentiality is one of the values that mark the work and research within MSB. The purification of form, construction systems, materials, until we reach items that stand out for their naturalness, tranquility, serenity ... essentiality.

Mitsutomo Matsunami Architect & Associates

Japan, www.mma-design.com

We deliberately think what kind of house is good to make life better happily, and are proposing the space where the mind becomes rich every day when the desire and the house of the feature and the resident on the site harmonize. And, it is not novel but a practicable design is borne in mind.

220-223

MYCC

Spain, www.mycc.es

Mycc is an architecture practice based in Madrid and led by Carmina Casajuana, Beatriz Casares and Marcos Gonzalez.

20-23

42-43

Naruse Inokuma Architects

Japan, www.narukuma.com

Naruse Inokuma Architects is an up-and-coming design office based in Japan. The design scope is not limited only to architecture but also spans fields from product and furniture to landscape design. Their strength lies in the ability to base their designs on fundamental concepts related to how things are used and produced, rather than simple form making.

The architects received INTERNATIONAL ARCHITECTURE AWARDS 2009 , DESIGN FOR ASIA AWARDS 2009 Merit Recognition, 2008 Colors Designer International Competition Special Mentions etc.

312-313

Nendo

Japan, nendo.jp

Giving people a small “!” moment. There are so many small “!” moments hidden in our everyday.

But we don't recognize them. And even when we do recognize them, we tend to unconsciously reset our minds and forget what we've seen.

But we believe these small“!” moments are what make our days so interesting, so rich.

That's why we want to reconstitute the everyday by collecting and reshaping them into something that's easy to understand. We'd like the people who've encountered Nendo's designs to feel these small“!” moments intuitively.

That's Nendo's job.

116-117

ninkipen!

Japan, www.ninkipen.jp

Ninkipen! is a first-class Japanese architect studio established in 2005 by Imazu Yasuo.

28-31

Nota Design International Pte Ltd

Singapore, www.notionvague.com

Open AD

Latvia, openad.lv

Open AD (Open Architecture and Design) is established in 2006, the architects team includes Zane Tetere, Elina Tetere, Rita Saldeniece, Karlis Lauders and Dins Vecans. The studio has received many awards, such as Award BEST OFFICE AWARDS 2011 in Moscow as best foreign interior for McCann-Erickson Riga and Inspired office, Award “Arhip-The architecture Award 2009-Innovation” in Moscow, etc.

330-333

partnerundpartner-architekten

Germany, www.partnerundpartner.com

Partnerundpartner-Architekten is a German architect studio led by Klaus Günter, Jörg Finkbeiner and Christian Necker.

140-143

Pereda Perez Arquitectos

Spain, www.peredaperez.com

Based Pereda Perez Arquitectos in Pamplona, where Carlos Pereda Iglesias (Burgos 1970) and Oscar Perez Silanes (Pamplona 1966) conduct their business engaged in the research and realization of architectural projects. Their work has been published in various journals and national publications.

144-147

PROCESS5 DESIGN

Japan, process5.com

PROCESS5 DESIGN is an interior design company based in Osaka, Japan.

186-189

RADI - Rena Dumas Architecture Intérieure

France, www.renadumas.com

Originally created with a focus on interior architecture projects, RADI today is an agency practicing architecture, interior architecture and design.

8-11

200-203

Roberto Murgia

Italy, www.robortomurgia.it

364-367

richärd+bauer

USA, www.richard-bauer.com

Roberto Murgia has been concentrating on architecture, interiors and design since 2009. Over recent years, he has completed several important projects, such as the restructuring of a hotel in the Lake Como area and the new headquarters of EDI (Effetti Digitali Italiani). Since 2005, he has designed the Muji sales outlets in Italy and, since 2009, in France too. The Studio is on the short list of the tender for the new Eni headquarters of Eni in the Dominique Perrault Group.

260-263

264-267

SHH

UK, www.shh.co.uk

Architectural practice and design consultancy SHH was set up in 1992 by its three directors and co-founders: David Spence, Graham Harris and Neil Hogan. The company, based in its own west London studio, is a 55-strong practice and employs a highly talented and cosmopolitan team of architects, interior designers, graphic designers, technical and administrative staff.

380-383

Skidmore, Owings & Merrill LLP (SOM)

USA, www.som.com

Memorable architecture of any scale is the product of collaboration and innovation – two forces that, along with our drive for excellence, remain SOM's defining traditions. Seasoned designers, technical architects, and managers lead our architecture teams, providing the diverse knowledge that is essential to each project's success.

248-251

252-255

Stone Designs

Spain, www.stone-dsgns.com

Stone Designs is the story of its two creators (Cutu Mazuelos 1973 and Eva Prego 1974) who in September 1995 launched out on the adventure of creating their own studio, in order to develop their projects from a personal perspective, without censure or filters. For this reason they never worked for anyone else and they forged their apprenticeship

as it was done in the past, from below and with much sacrifice.

40-41

STUDIO IDE Architects

USA, www.studioide.com

IDE is an attitude; a fuel for Innovation in Design and Exploration in the field of Architecture.

We're a Chicago-based Architecture / Design Studio, established in 2008 as the collaborative synthesis of Paul Tebben and Vladimir Radutny. Through a critical assessment of contemporary life, our work strives to transcend the conventional interpretations of space, material, form and function. We place emphasis on the opportunities of program, the intricacies of place and the nuances of culture. These become the catalysts for design strategies that move beyond aesthetic response, creating intelligent solutions grounded in function, context and personal meaning.

16-19

150-153

SUGAWARADAI SUKE

Japan, sugawaradaisuke.com

Our objective is creating beautiful relationships between people, objects and things by beautiful forms. Creating beautiful relationships between people and environment in Architectural design, between people and object in Product design, between people and people in Branding and Graphic design.

Our final object is making the world more attractive and colorful by the beautiful unique relationships. We believe this is the role of Architects and Art Direction in our society.

178-181

Sybarite

UK, www.syb.co.uk

Sybarite is an architecture and design practice drawing its passion and inspiration from organic forms in nature as well as technologies transferred from other industries, creating a distinctive style both fluid and timeless. The word "Sybarite" encapsulates the philosophy – voluptuous, luxurious and pleasurable.

246-247

TDC Tsigos Design and Construction

Greece, tdc.gr

286-289

UXUS

The Netherlands, www.uxusdesign.com

Founded in Amsterdam in 2003, UXUS is an independent award winning design consultancy specializing in strategic design solutions for Retail, Communication, Hospitality, Architecture and Interiors.

UXUS creates "Brand Poetry", fusing together art and design, and creating new brand experiences for its clients worldwide. We define "Brand Poetry" as an artistic solution for commercial needs.

290-295

VAÍLLO + IRIGARAY

Spain, www.vailloirigaray.com

60-63

za bor architects

www.zabor.net

Za bor architects is a Russian architecture studio established in 2003 by Arseniy Borisenko and Peter Zaytsev.

344-351

zauberscho(e)n

Germany, www.zauberschon.eu

Zauberscho(e)n is a young team which was founded in 2008 by Andreas Schüring and Stephan Weber. Andreas Schüring, born in 1978 and Stephan Weber, born in 1981, both received Bachelor of arts in architecture at the Münster School of Architecture in 2006 and Master of arts in architecture in 2010. They received the project of extension of the Library for Architecture, Art and Design on the Münster School of Architecture, and on the occasion of this project, they found their student planning team zauberscho(e)n.

86-89

Zecc Architecten

The Netherlands, www.zecc.nl

The strength of a tree equals the depth of its roots. Our architecture is the same. Zecc works from three ground principles: what we build is functional, sustainable and engages all senses at the same time. Uniting these three principles often seems an impossible assignment. However, this is the core of Zecc's strength. We call it Grounded Architecture. Architecture with a strong foundation. With deep roots. Since these bring forth the most wonderful ideas.

Acknowledgements

We would like to thank all of the designers involved for the kind permission to publish their works, as well as all of the photographers who have generously granted us the right to use their images. We are also very grateful to many other people whose names do not appear in the credits but who made specific contributions and provided support. Without these people, we would not have been able to share these beautiful works of design with readers around the world.



ISBN 978-988-15703-8-3



9 789881 570383